

Eastern Hokkaido Tourism Seminar

THE VALUE OF FOUR DISTINCT SEASONS

It's a amazingly diverse climate in Eastern Hokkaido
that brings new experiences with every season.



EXPLORE *the* WONDERLAND
EASTERN HOKKAIDO



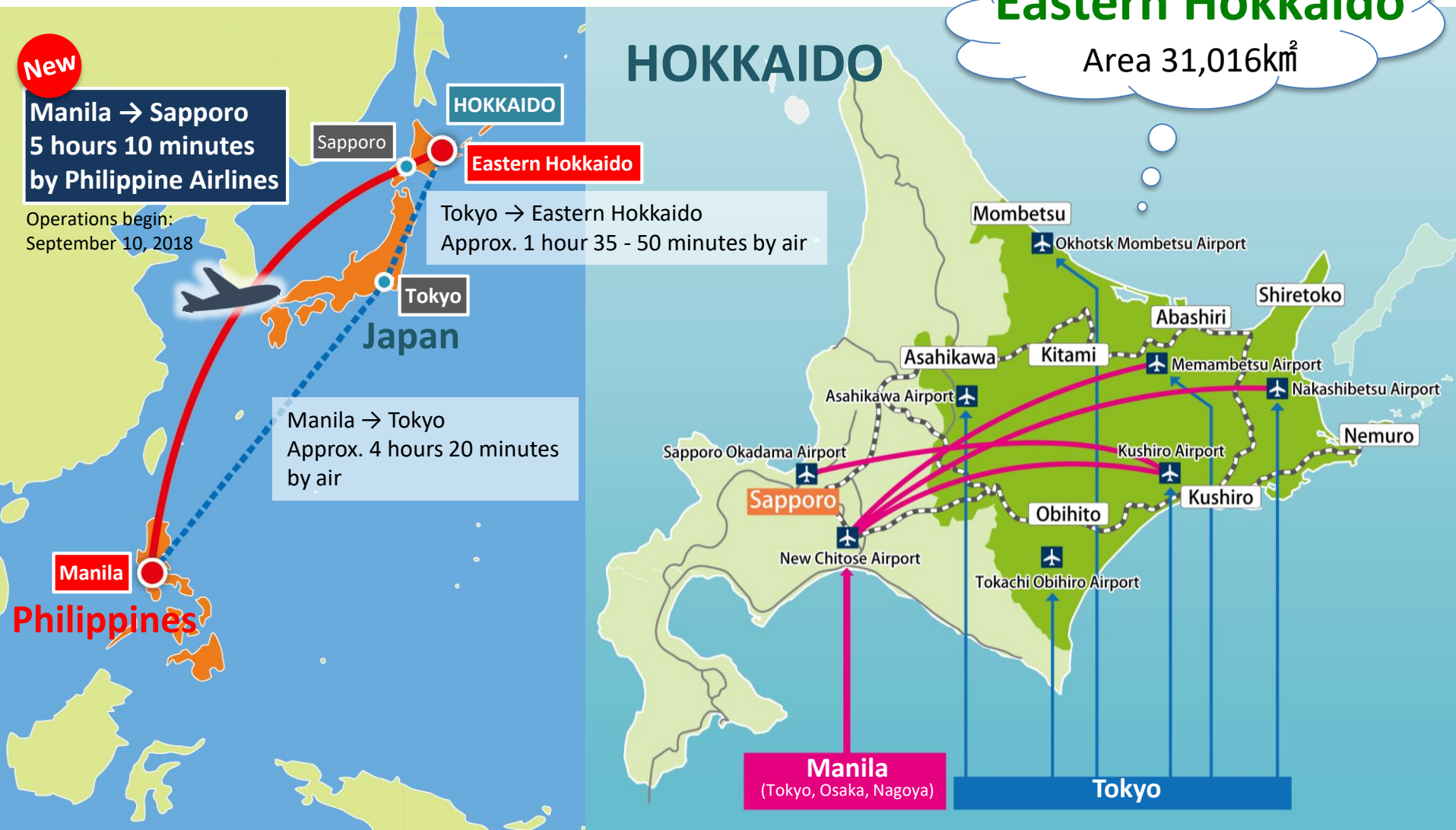
Overview of Eastern Hokkaido

◎Hokkaido takes up 22.1% of land in Japan.

◎Eastern Hokkaido covers approximately 45% of land in Hokkaido.

Eastern Hokkaido

Area 31,016km²



Calendar of the Four Seasons (Eastern Hokkaido)

Jan.	Feb.	Mar.	Apr.	May	Jun.	Jul.	Aug.	Sep.	Oct.	Nov.	Dec.
------	------	------	------	-----	------	------	------	------	------	------	------

Winter

Spring

Summer

Autumn

Winter

Monthly survey concerning visitors from Malaysia (2017) *Source: JNTO

Winter

Spring

School Holidays

Summer (Late March - June)

Christmas Holidays

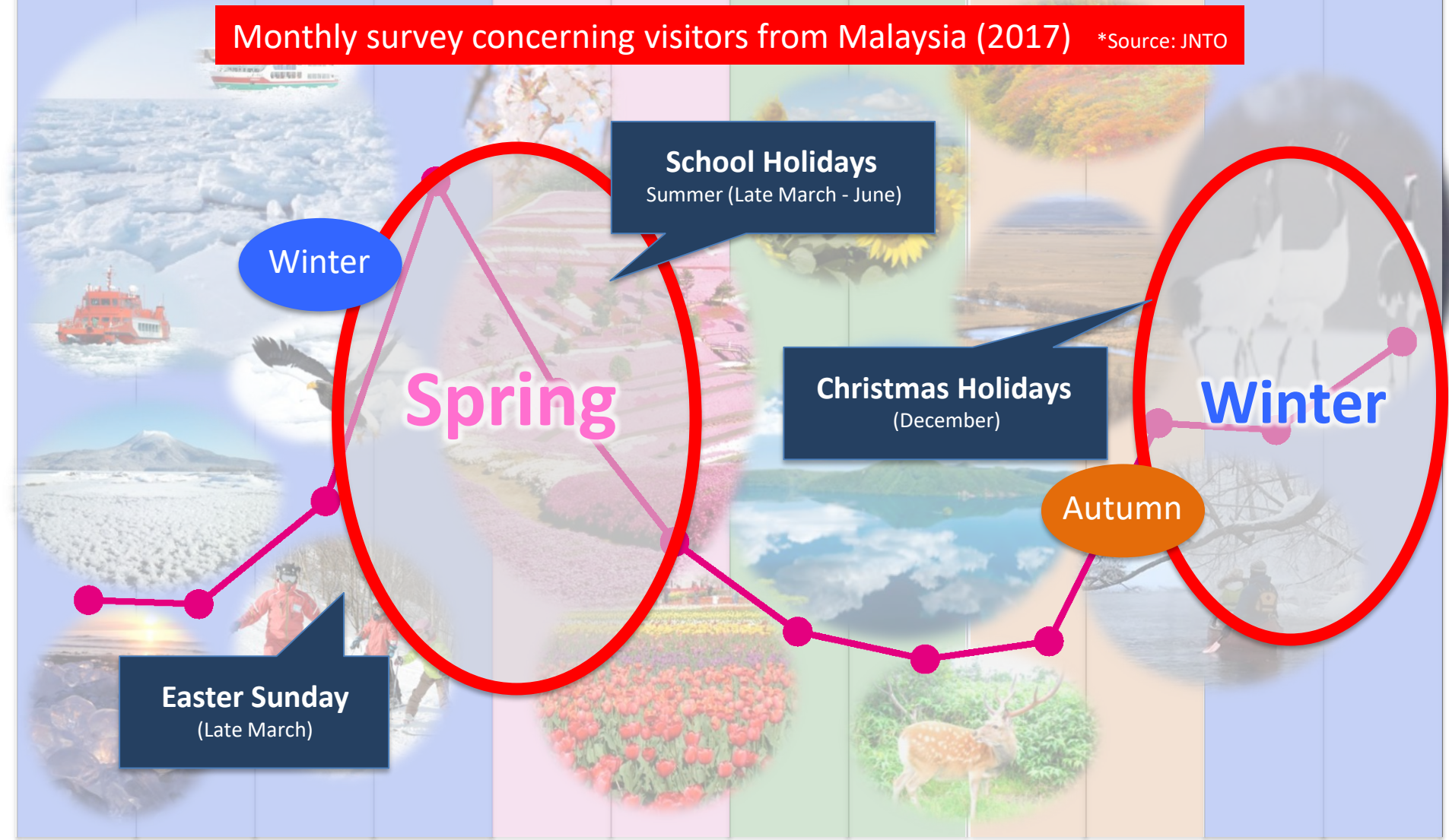
(December)

Winter

Autumn

Easter Sunday

(Late March)



November

December



Nov. 2

School Holidays



Dec. 11

Christmas Holiday

Autumn to Early Winter



Nov. 22



Dec. 21



TOKACHI

Tokachigawa Nature Tour

<Period: November - March 10, April 28 - October 31>

Combined tour of rafting and nature observation.

Experience salmon-watching in the fall, and eagle-watching in the winter.

Tokachi Nature center <http://www.nature-tokachi.co.jp/>

KUSHIRO

Kushiro Wetlands National Park

Canoeing on Kushiro River



Tokachi

Kushiro

<Period: Year-round>

Canoe gently down the Kushiro River, which meanders through the Kushiro Wetlands National Park. A remarkable experience that will make you forget the cold.

Kushiro - LakeAkan Travel Guide <http://en.kushiro-lakeakan.com/>



SHIRETOKO

Shiretoko Guided Walk



<Period: Early April - Late November>

*Tour dates will differ depending on the condition of snowpack.

Seasoned nature guides will take you on a walk through the vast nature of Shiretoko. Enchanting encounters with wildlife is very probable early in the morning; who knows you may even see an Ezo deer.

Shiretoko Shari-cho Tourist Association <https://www.shiretoko.asia/>

SHIRETOKO

Shiretoko Snowshoe tour



Shiretoko

<Period: Early December - Late March>

*Tour dates will differ depending on the condition of snowpack.

Put on pair Western snowshoes, magical shoes that allow you to walk anywhere on the snow at ease, and hike deep into the forest!



KUSHIRO

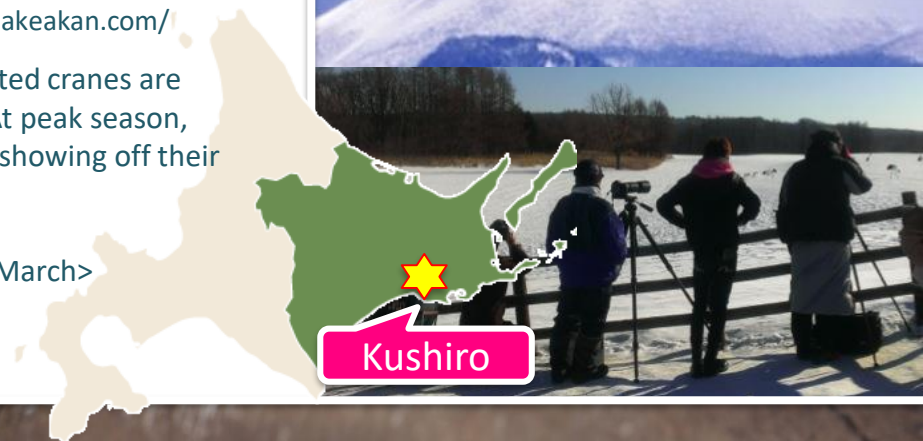
Natural Monument of Japan

Red-crowned Crane

Kushiro - Lake Akan Travel Guide
<http://en.kushiro-lakeakan.com/>

Wild Japanese red-crested cranes are fed during the winter. At peak season, over 300 cranes alight, showing off their beautiful forms.

<Feeding: November - March>





TESHIKAGA

Sand Bath at Lake Kussharo

Swans alight on the shores of Lake Kussharo between late November and April.

The sand baths along the shores are created by hot springs, and are warm even during winter, and swans can be seen resting their wings in the warm water.

Teshikaga Navi

<http://www.masyuko.or.jp/pc/english/>

TESHIKAGA

Lake Mashu Star Watching Tour

< Period: Year-round >

At night, there is nothing around Lake Mashu to block the scenery, and on an especially clear night, you can find yourself staring up at a sky full of stars, as far as the eye can see.

Stars are especially visible during the winter, when the air is cold and clear, making them appear like diamonds in the sky.



Teshikaga

Tourism Teshikaga <http://www.tourism-teshikaga.co.jp/>

MOMBETSU

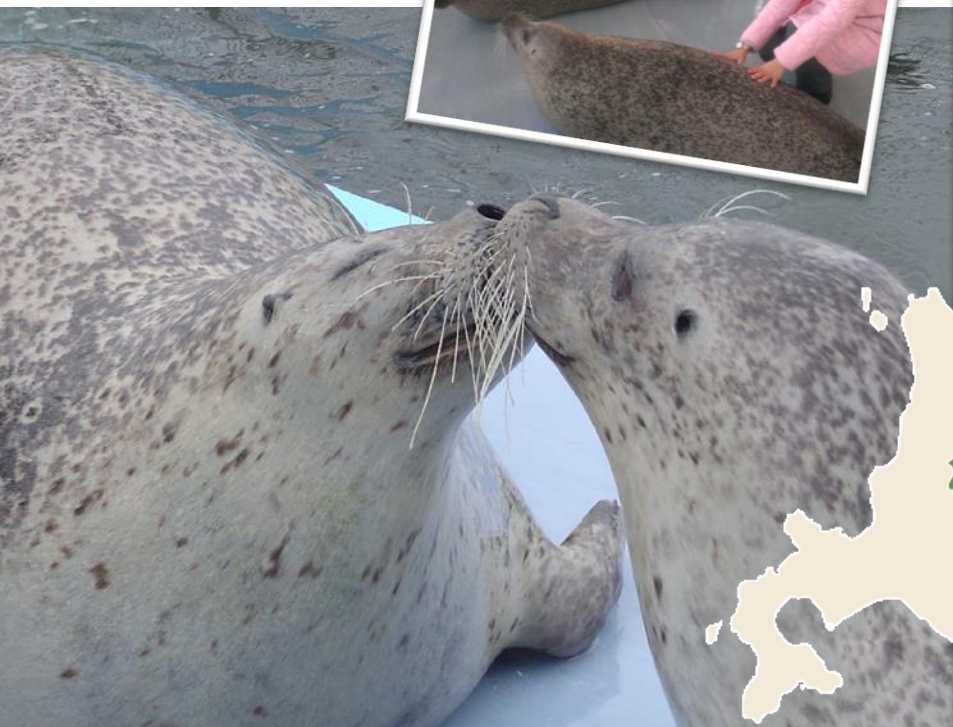
Okhotsk Tokkari Center

<http://www.gomaland.com/>

Dozens of seals, such as spotted, ringed and ribbon seals can be seen here.

During feeding time, which takes place 5 times a day, you can enjoy watching the cute seals eat and perform.

Pet the seals!



MOMBETSU

Okhotsk Sea Ice Museum GIZA

<http://giza-ryuhyo.com/>

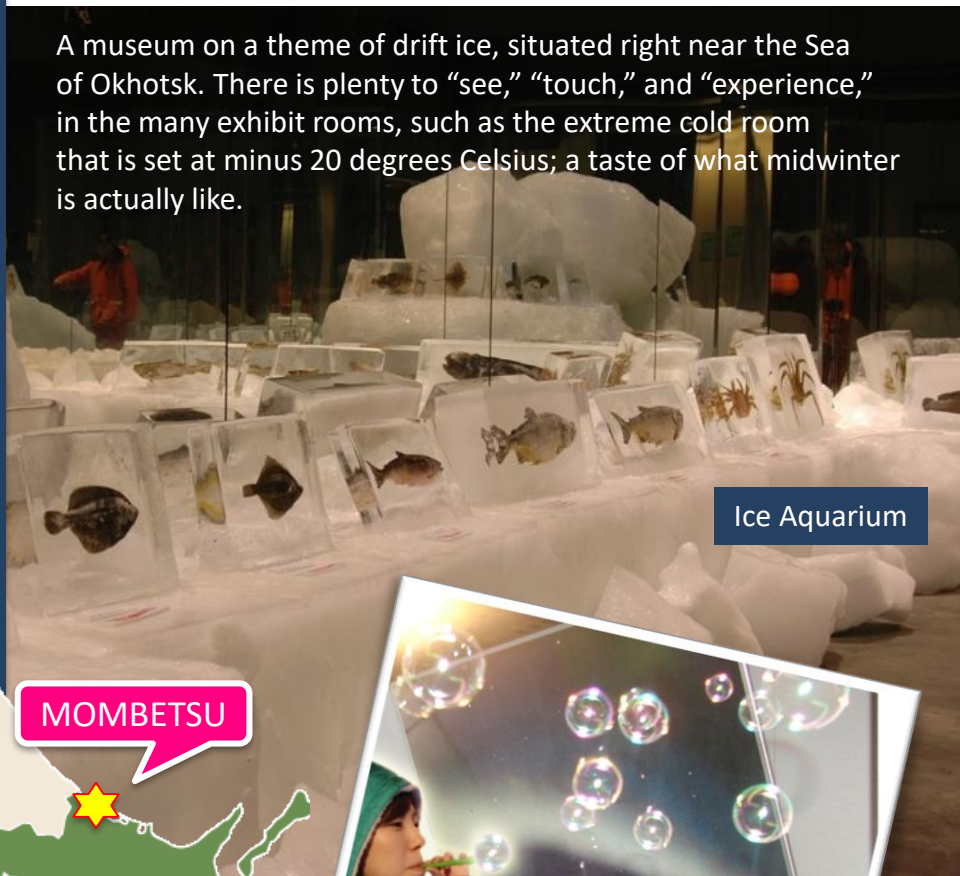
A museum on a theme of drift ice, situated right near the Sea of Okhotsk. There is plenty to “see,” “touch,” and “experience,” in the many exhibit rooms, such as the extreme cold room that is set at minus 20 degrees Celsius; a taste of what midwinter is actually like.

Ice Aquarium

MOMBETSU



Blow bubbles that freeze



ABASHIRI

Okhotsk Ryu-hyo Museum

<http://www.ryuhyokan.com/>

Welcome to where sound and light transport you to the wonderful world of drift ice.

Wet towels will freeze!



ABASHIRI

Abashiri Prison Museum

<http://www.kangoku.jp/>



An outdoor museum, based on the history pertaining to the colonization of Hokkaido, and the role the prisoners played.



Jail made out of snow!

SAHORO

Tokachi Sahoro Resort Ski and Snow Fun

http://www.sahoro.co.jp/winter/w_ski

■ Season: Dec. 1, 2018 – Apr. 8, 2019 (tentative schedule)

Skiing and snowboarding are not the only ways to have fun in the winter.

We have a great lineup of winter activities that include everything from fun in the snow for first-timers, to more fresh and stimulating activities.

Sapporo 166km/ approx. 2 h 40 min.

Obihiro 54km/ approx. 60 min

New Chitose Airport 154km/ approx. 2 h 30 min.

Tokachi Obihiro Airport 77km/ approx. 80 min.

SAHORO

Sahoro Resort ⇄ JR Shintoku Station
Free shuttle bus service (tentative schedule)

■ In service between Dec. 3 – Mar. 31



Rent everything you need to play, from skis and snowboards to boots and ski wear.
Experience skiing and snowboarding without the hassle!



OBIHIRO

Kita-no Yatai

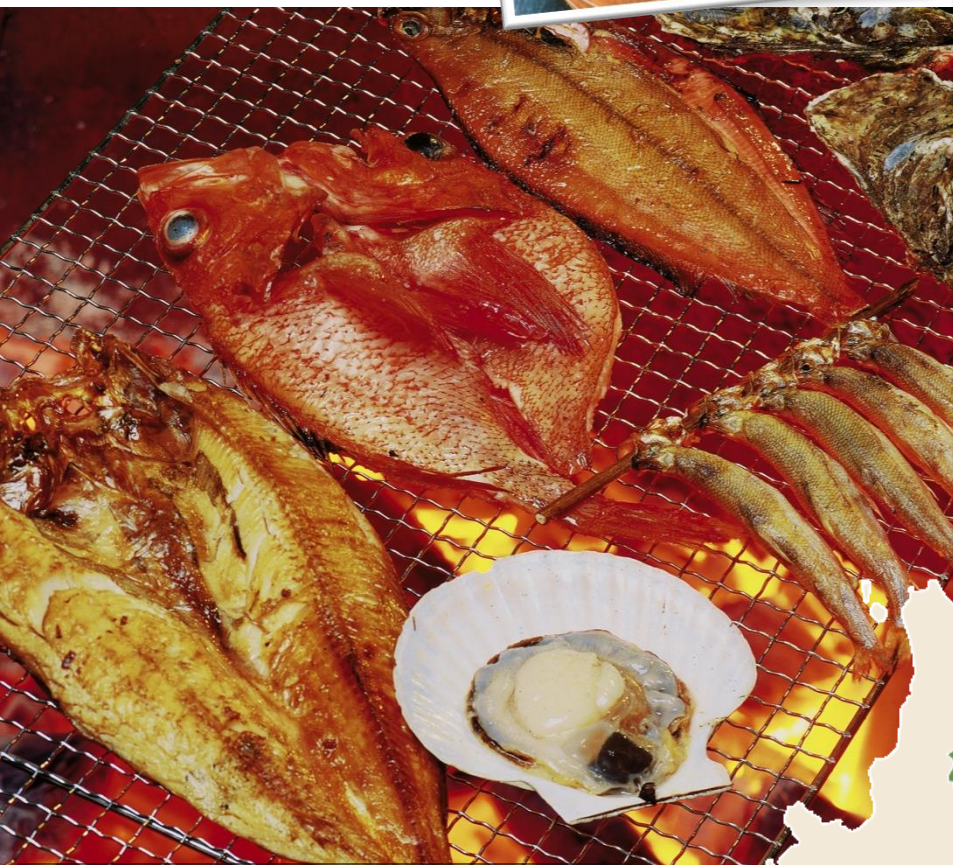
A collection of Japanese cuisine and kushiyaki (charbroiled foods) restaurants, pubs, Italian and French restaurants.

<http://www.kitanoyatai.com/>



KUSHIRO

Robata Grill



Fresh seafood is best cooked over charcoal. The delicious flavor can be tasted especially when it is piping hot.

Take a stroll through the market and pick out a little bit of each kind of seafood you like, then have it prepared over a bowl of rice, and you have your original seafood donburi!



KUSHIRO



Kushiro

Washo Market **Katte-don**

Washo Market <http://www.washoichiba.com/>

January - February

Chinese New Year's

Real Winter (Midwinter)





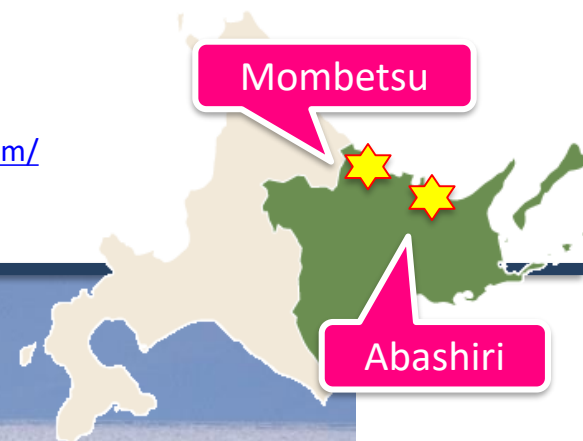
MOMBETSU

Icebreaker Cruiser Garinko II

◎Season/ Late January – March

The Icebreaker Cruise Boat Garinko II is an impressive red vessel. The large screw breaks the ice as the vessel progresses through the icy waters.

<http://www.garinko.com/>



ABASHIRI

Sightseeing Icebreaker Cruiser Aurora

◎Season/ Late January - early April

The cruise boat chases the drift ice as it flows, so passengers experience a thrilling ride through the drift ice.

Sunset cruises are also available.

<https://www.ms-aurora.com/abashiri/>



SHIRETOKO**Shiretoko-Utoro Drift Ice Walk®**

◆ Season/ early Feb. – late Mar.

You can enjoy walking on drift ice in a special dry suit which is not usually allowed. Feel the power and mystery of nature on the field of drift ice.

©Shiretoko Naturalist Association <http://www.shinra.or.jp/>

**Shiretoko****BETSUKAI****Walk toward the horizon on Notsuke Peninsula**

◆ Activity period: January - mid March

During the harsh winter, when Hokkaido is enveloped in a blanket of white snow, take a walk across the frozen ice. Beautiful panorama views of an icy world can be seen.

©Betsukai Tourist Association http://betsukai-kanko.jp/index_en/

**Betsukai**

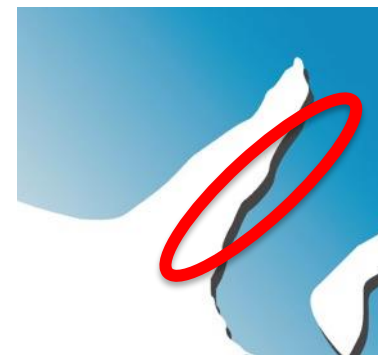
SHIRETOKO

Drift ice and Bird-watching Cruise

◆ Cruises available: Late January - early April

There is a higher chance of Steller's sea eagle and white-tailed sea eagle sightings between February and March.

Shiretoko Rausu-cho Tourism Association <http://www.rausu-shiretoko.com/>



Eastern Shoreline
of Shiretoko
<Rausu>



Lake AKAN

Frost Flowers

◆ Season/ Dec. – late Jan.

Frost flowers that bloom on the surface of the frozen lake can only be seen on a really cold day during winter.

Frost flowers only appear under severe cold conditions where the temperature drops below - 15 degrees Celsius, and when there is no wind.

Kushiro-Akanko Tourism

<http://ja.kushiro-lakeakan.com/>



TESHIKAGA

Lake Mashu Rime

◆ Season/ Jan. – Feb.

Winter transforms Lake Mashu into a wonderland of frozen mist.

When winter arrives, the moisture from fog or mist clings to the trees and freezes, covering the trees in a beautiful blanket of frozen ice known as “rime.”

Tourism Teshikaga

<https://tourism-teshikaga.co.jp/>



Jewelry Ice

Ice shot into the sky is illuminated by sunlight and appears like sparkling jewels... Jeweled Ice can be seen between mid-January and February.



Smooth ice rocks that have been washed ashore glitter and sparkle like jewels in the sunlight.



Lake AKAN

Lake Shikaribetsu Kotan (Ice Village)

Outdoor bath made of ice

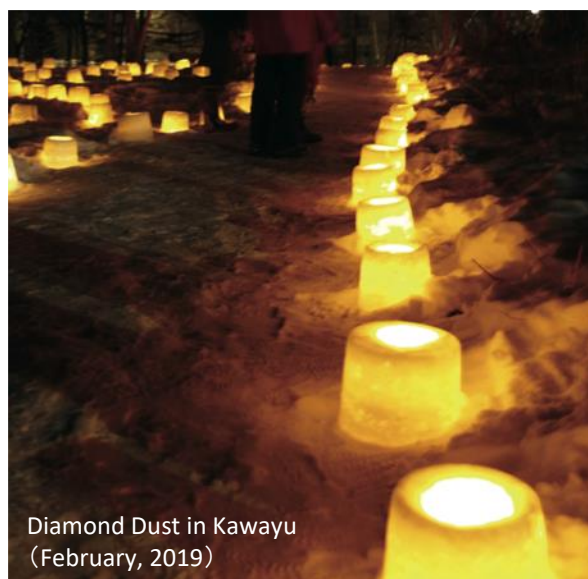
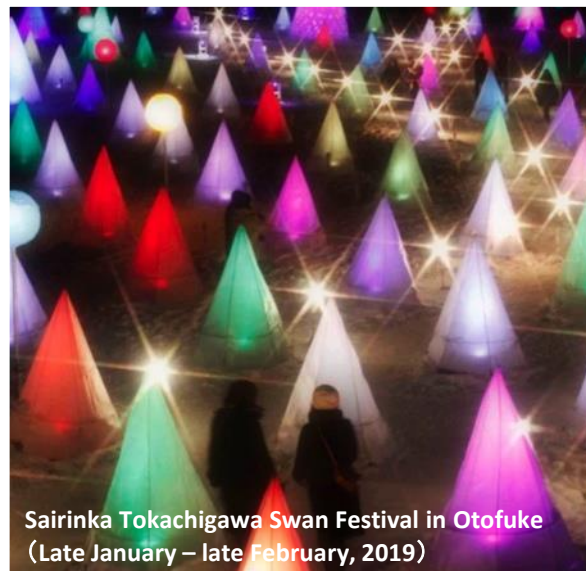
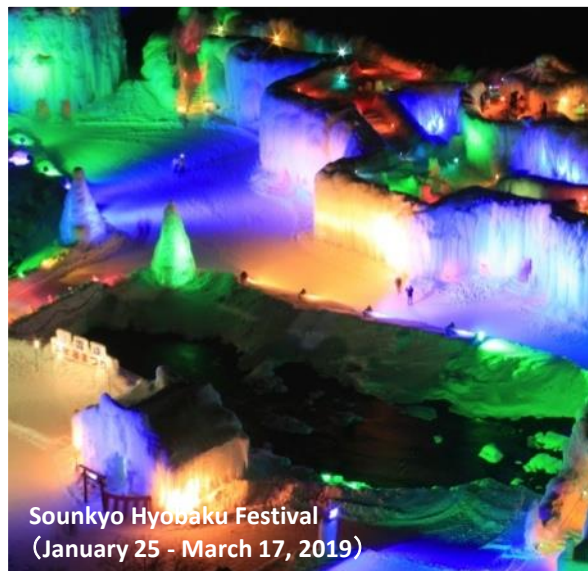
◆ Period/ Late January - late March, 2019

The only outdoor bath in the world,
made out of ice on a frozen lake, is super liberating!

<http://www.nature-center.jp/kotan/>



Winter Events in Eastern Hokkaido



**AKKESHI**

Oysters

Akkeshi is the only place in Japan where you can enjoy succulent fresh oysters all year long.

Akkeshi Mikaku Terminal Conchiglie
<http://www.conchiglie.net/>

**RAUSU**

Fresh Sea Urchin

Season/ mid-Jan. - June

Sea urchin harvesting takes place Between mid January and June in Rausu, so you can enjoy delicious sea urchin in the middle of winter, As Middle as January.



May

June - July



May. 3

School Holidays



June. 1

Ramadan Break

Spring to Early Summer



May. 18



July. 10

SHIRETOKO

Natural World Heritage Site Shiretoko

Inscribed into UNESCO World Heritage in 2005, Shiretoko is home to invaluable fauna and flora that inhabits some of the most beautiful wilderness left in the world.



Lingering snow around the Shiretoko Five Lakes (Season/ May)

Shiretoko is a sanctuary for wildlife such as Ezo brown bears, Ezo deer, Northern fox, Steller's sea eagles, white-tailed sea eagles, Blakiston's fish owl, sea lions, orca and much more.



SHIRETOKO

Utoro cruise (West coast)

<Season : April - October>

Take in the remarkable view of the Shiretoko Peninsula from the cruiser. See unusual rock formations, waterfalls, wild brown bears, deer, and white-tailed sea eagles, scenery which cannot be seen by land.



SHIRETOKO

Rausu cruise (East coast)

<Season : April - October>

See sperm whales, dolphins, and Procellariidae (seabirds) up close!



ABASHIRI Area

Higashi Mokoto Shibazakura (moss phlox) Park (Ozora)

<http://www.shibazakura.net/>

©Season/ mid May - mid June

Blooming season: mid May to mid June. A pink blanket of dainty moss phlox flowers covers the hillside, approximately one-hundred thousand square meters in area.



MOMBETSU Area

Takinoue Shibazakura (moss phlox) Park

Takinoue-cho Tourism Association

<http://takenoue.com/>

The total area of the park situated on a small hill, covers approximately one-hundred thousand square meters.

Flowers bloom between early May and mid June.

Takinoue

Ozora



MOMBETSU Area

Kamiyubetsu Tulip Park

Between May and early June, 1.2 million tulips made up of 120 varieties and every imaginable color, bloom all at once.

Kamiyubetsu Tourism Association
<http://www.yubetsu.gr.jp/>



Abashiri

Hana Tento Flower Gardens

Blooming season : June - mid-October
 Over 42 thousand flowers bloom at once across the 3.5 hectares of land during peak season.

Abashiri City Tourist Association
<https://www.abakanko.jp/>

Kamiyubetsu

Abashiri





Tokachi Millennium Forest



<http://hokkaido-garden.jp.e.ua.hp.transer.com/>

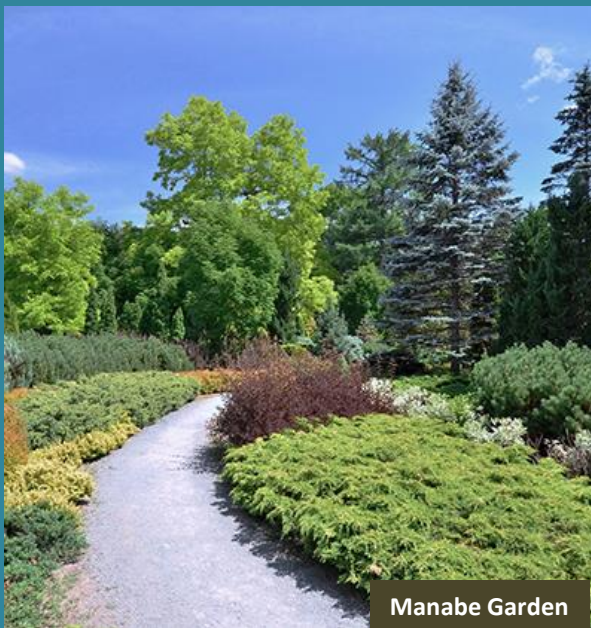
Hokkaido Garden Road

The Hokkaido Garden Road,
250 kilometers long,
connects eight signature gardens of Hokkaido.
Five of the eight gardens are located
within the Tokachi-Obihiro area.

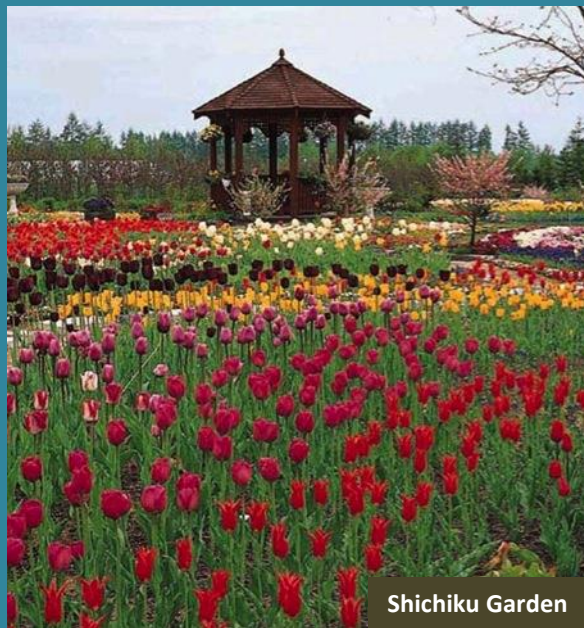
<Opens in late April>



Tokachi Hills



Manabe Garden



Shichiku Garden



Rokka-no Mori

Eastern Hokkaido

Nature experience programs available in Eastern Hokkaido

<Activity period: April - October>

There are tons of nature activity programs, such as hiking and canoeing, waiting to be experienced in Eastern Hokkaido.



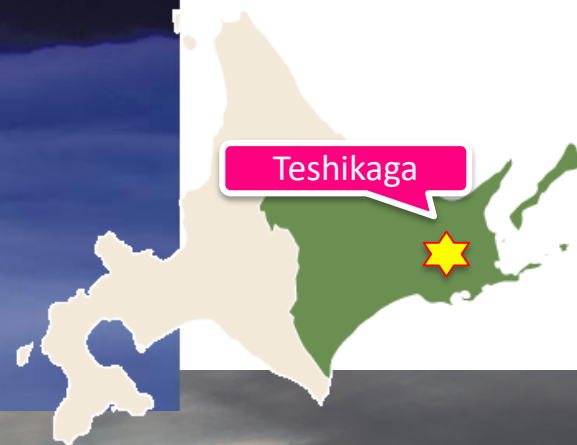
Hiking



Canoeing



Horse Trekking



TESHIKAGA

Lake Kussharo, Lake Mashu

Cloudsea Tour

(June - October)

Impressive encounters are reserved
for those who wake up early in the morning.

Tourism Teshikaga

<http://www.tourism-teshikaga.co.jp/>



This is the best
season during the
year for horsehair
crabs!

MOMBETSU and ABASHIRI

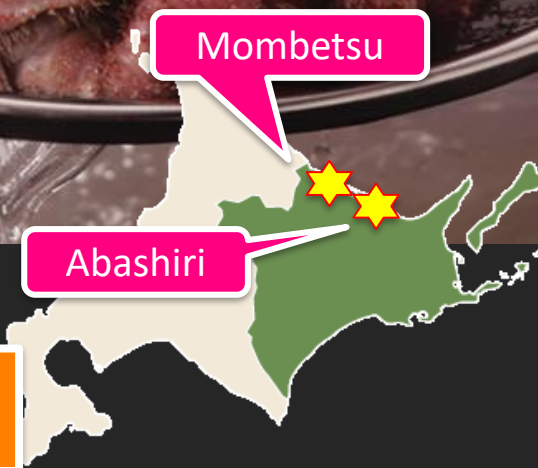
Okhotsk Marine Products

Fresh Caught Horsehair Crab

Horsehair crabs raised on rich nutrients that are available under the drift ice are firm, rich and succulent, and unbelievably delicious!
(April - May)



Abashiri spring crab/ April 20 – June 20
Mombetsu spring crab/ Early March – mid May



ABASHIRI

Fruit-picking

<http://www.shibazakura.net/>

Late June yields strawberries, and in July, cherries and blueberries are ripe for picking.



Strawberry: late June

ABASHIRI



Cherries, blueberries: July

Information on exclusive deals for our FIT customers



By Air

Quick and Convenient! Flights to major cities in Hokkaido take only 45 to 50 minutes!

JAL offers limited discount flights for foreign visitors!

Each **¥5,400** one way.

JAL Japan Explorer Pass

New Chitose = Memanbetsu,
Sapporo-Okadama = Kushiro

<http://press.jal.co.jp/en/release/201705/004282.html>



By JR Train

The Hokkaido Rail Pass, available only to foreign tourists, is a great way to travel across Hokkaido at a reasonable price. This pass allows unlimited rides on JR trains with Hokkaido, as long as it is within the valid period.

3-day **¥16,500**(adult fare)

flexible 4-day or 5-day

¥22,000(adult fare)

7-day **¥24,000**(adult fare)

JR HOKKAIDO <http://www.jrhokkaido.co.jp/>



EXPLORE *the* WONDERLAND

EASTERN HOKKAIDO

<http://en.visit-eastern-hokkaido.jp/>

For details.. ➡

We hope you will utilize this information for creating travel products to eastern Hokkaido.



EXPLORE *the* WONDERLAND
EASTERN HOKKAIDO

